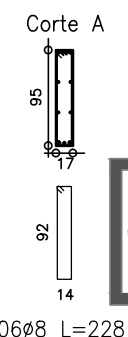
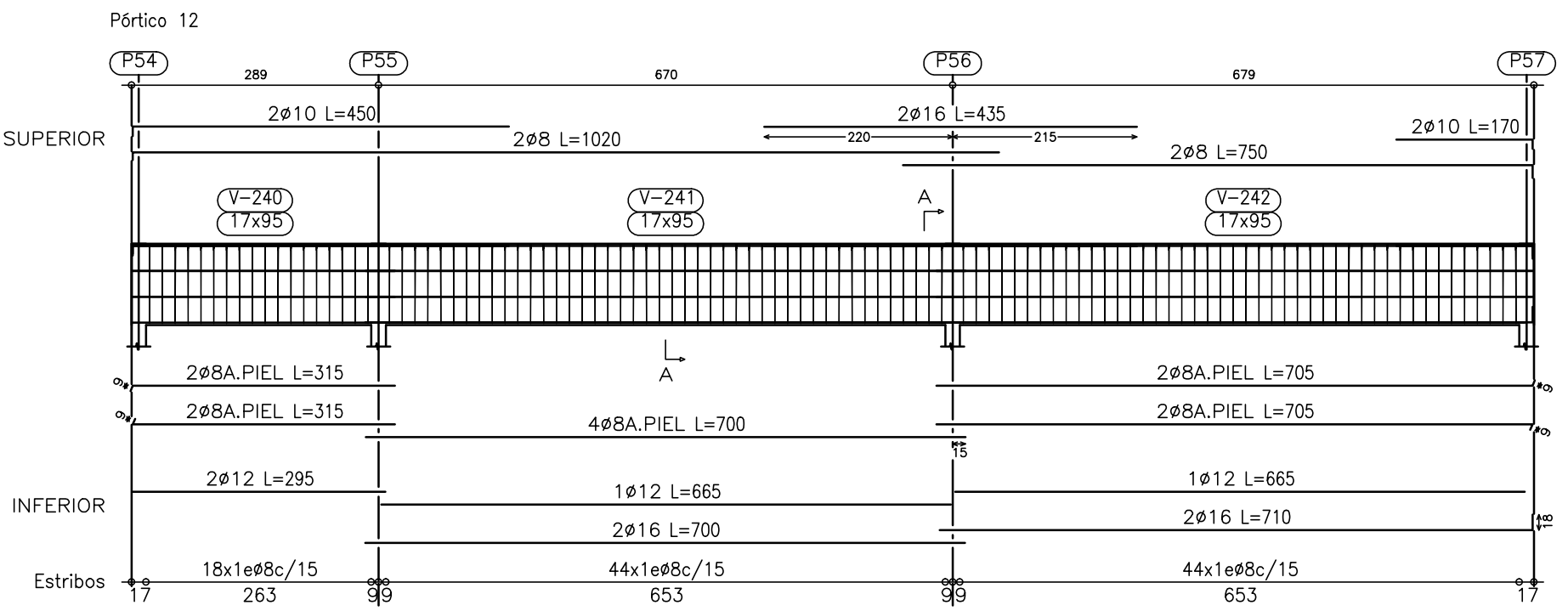
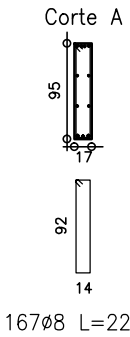
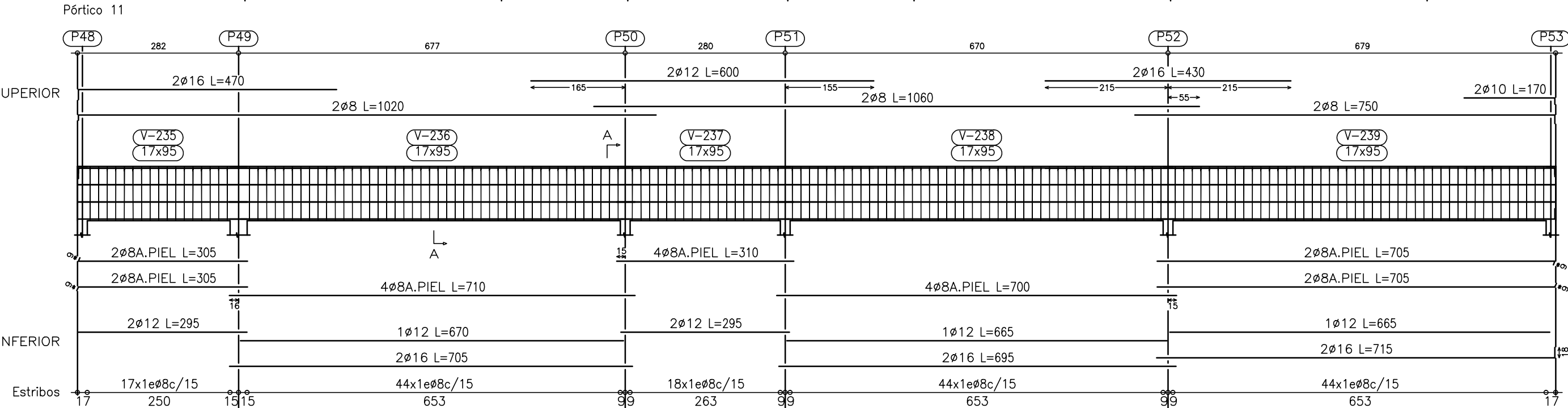
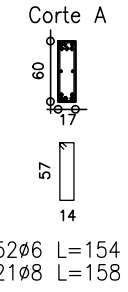
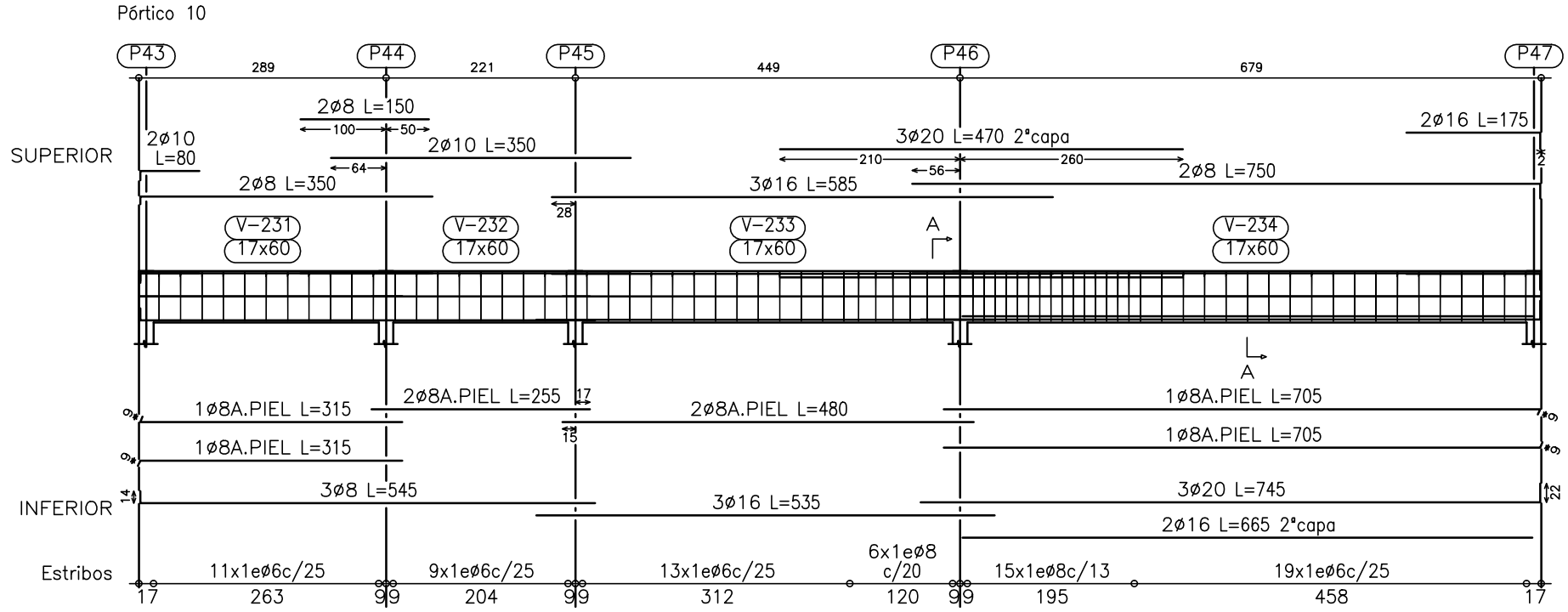
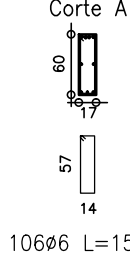
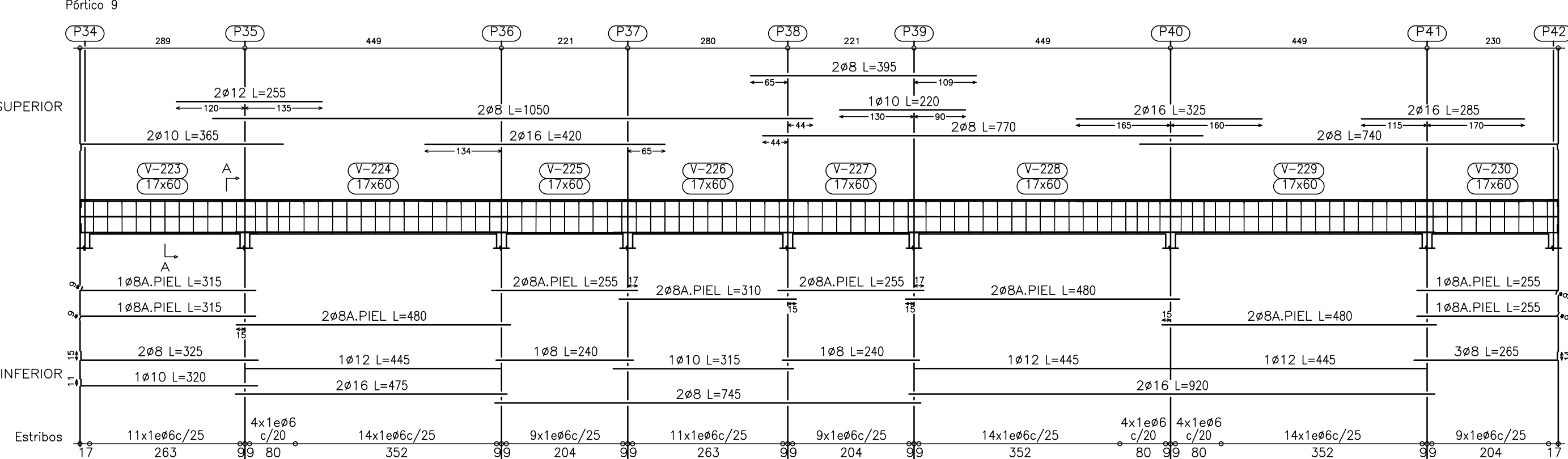
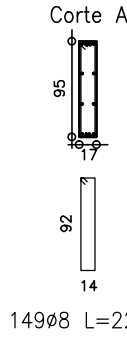
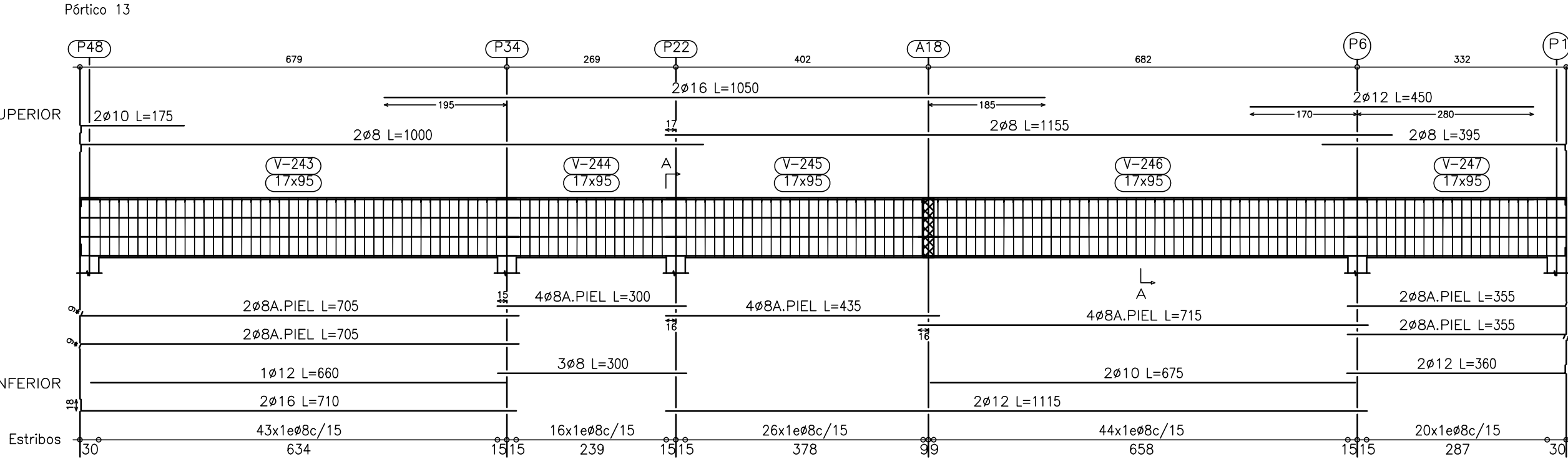
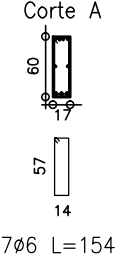
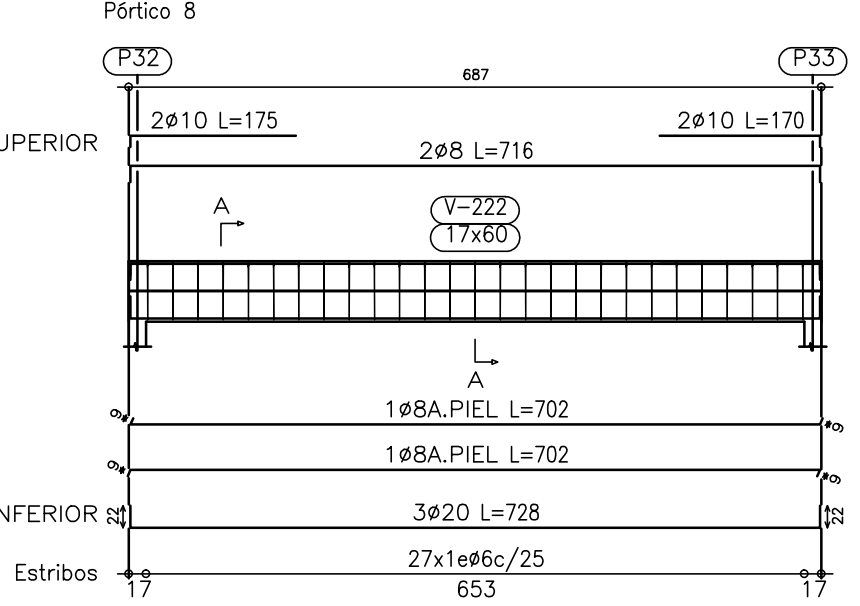
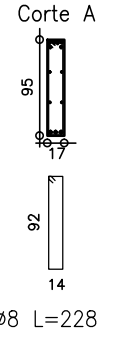
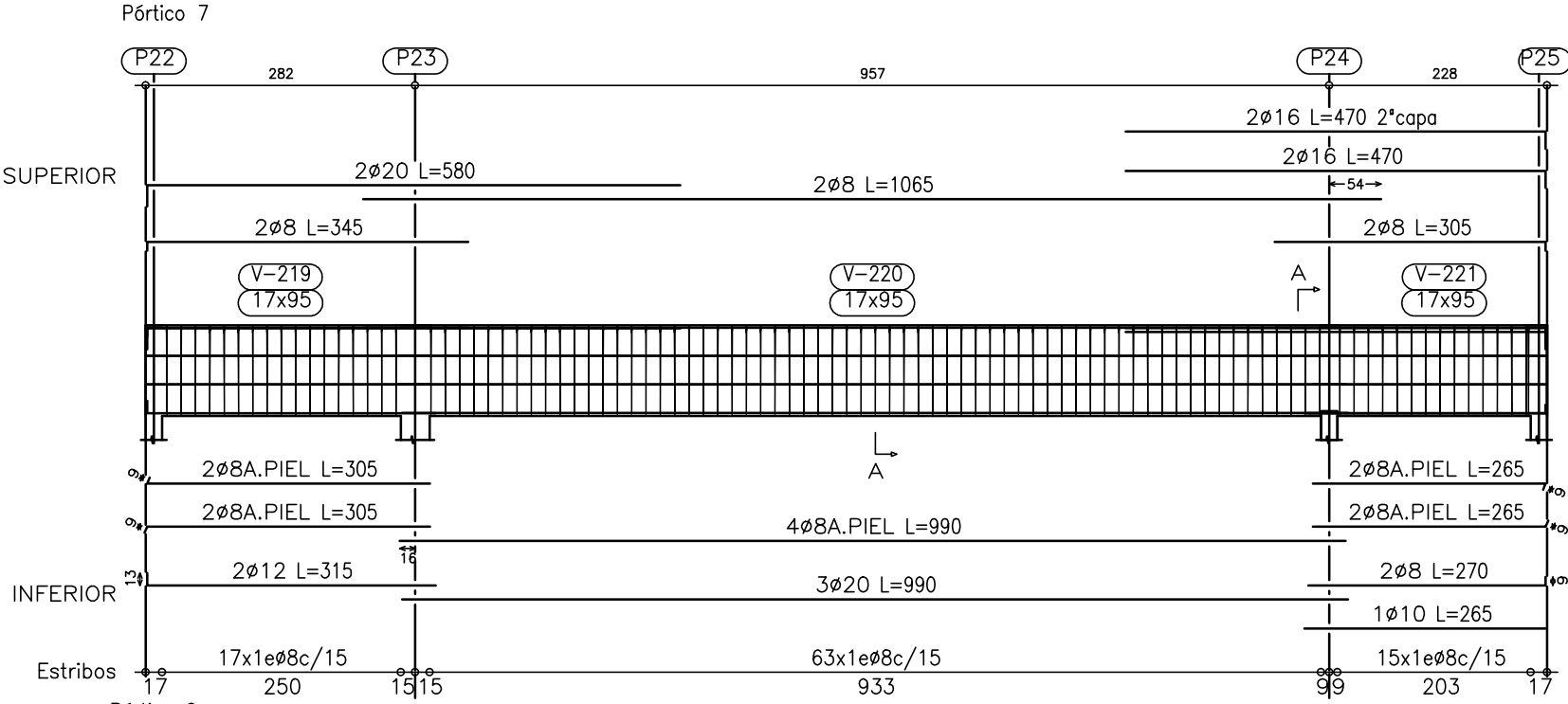
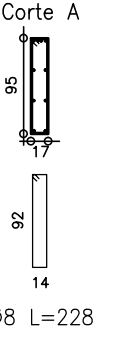
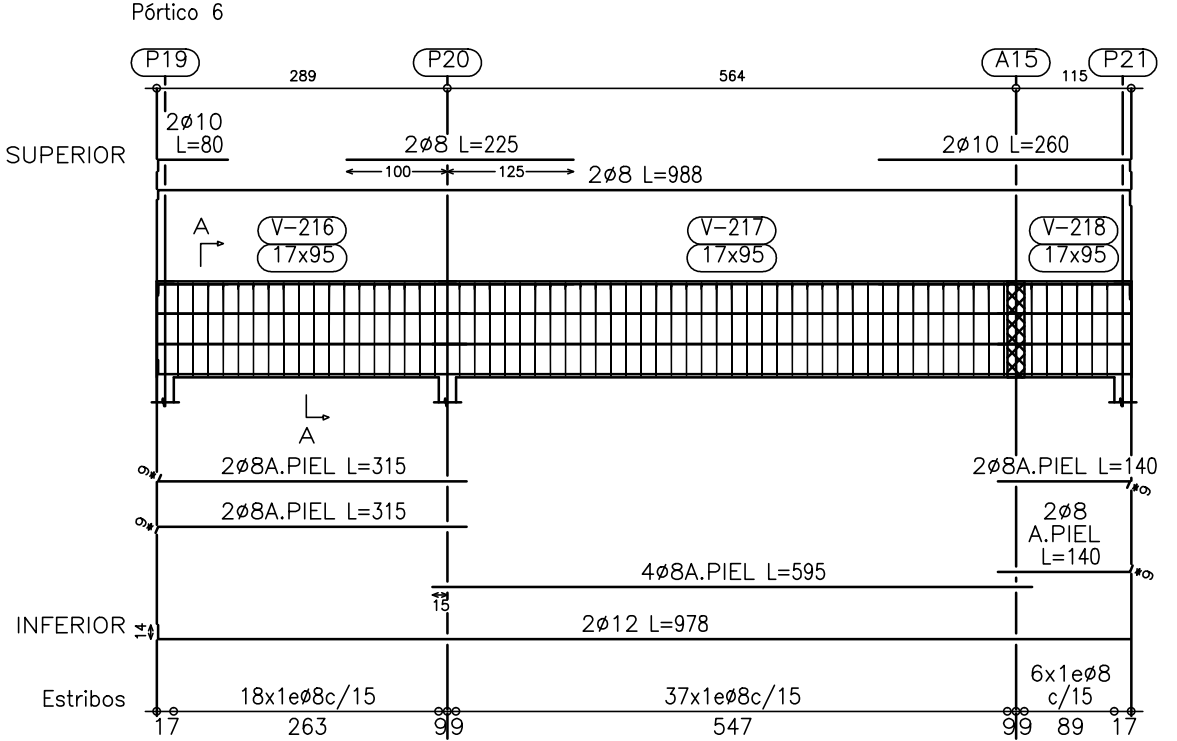
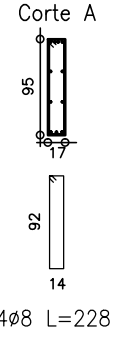
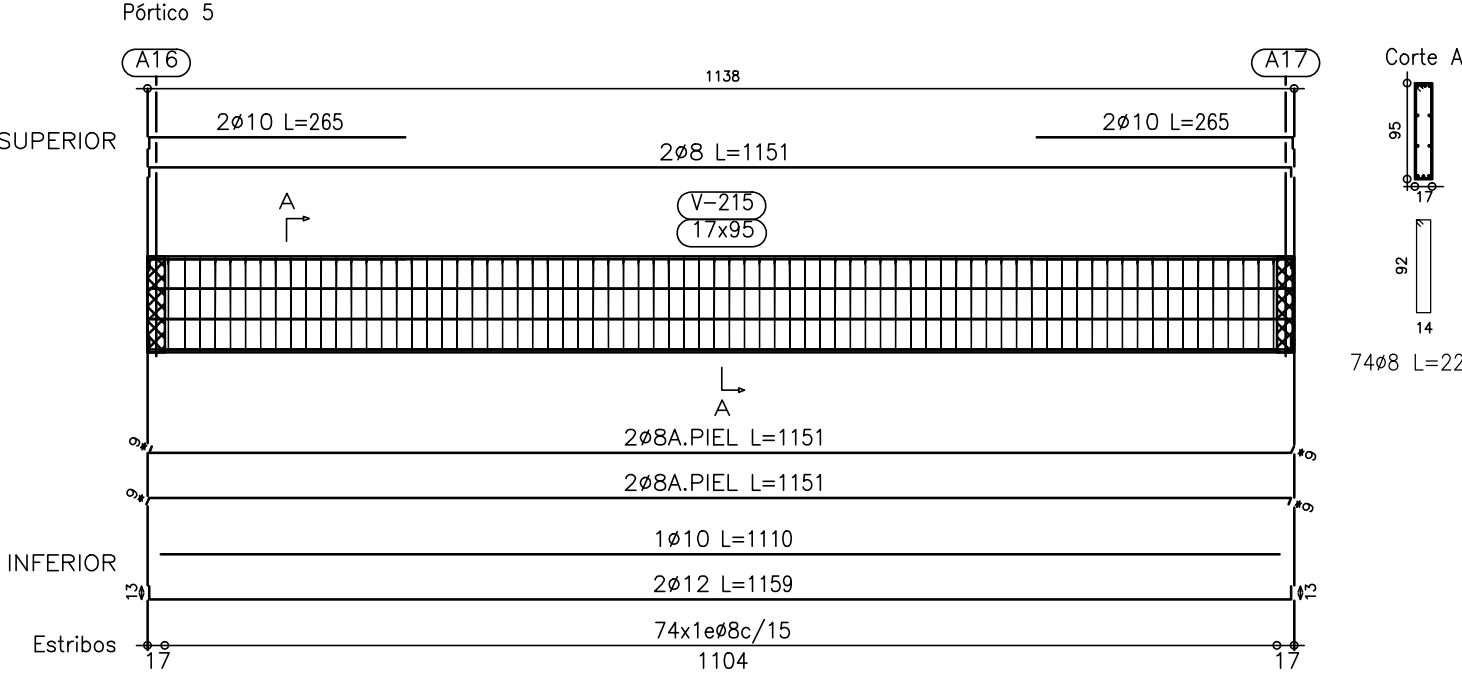
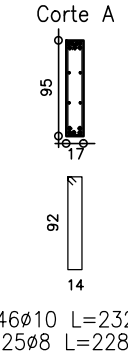
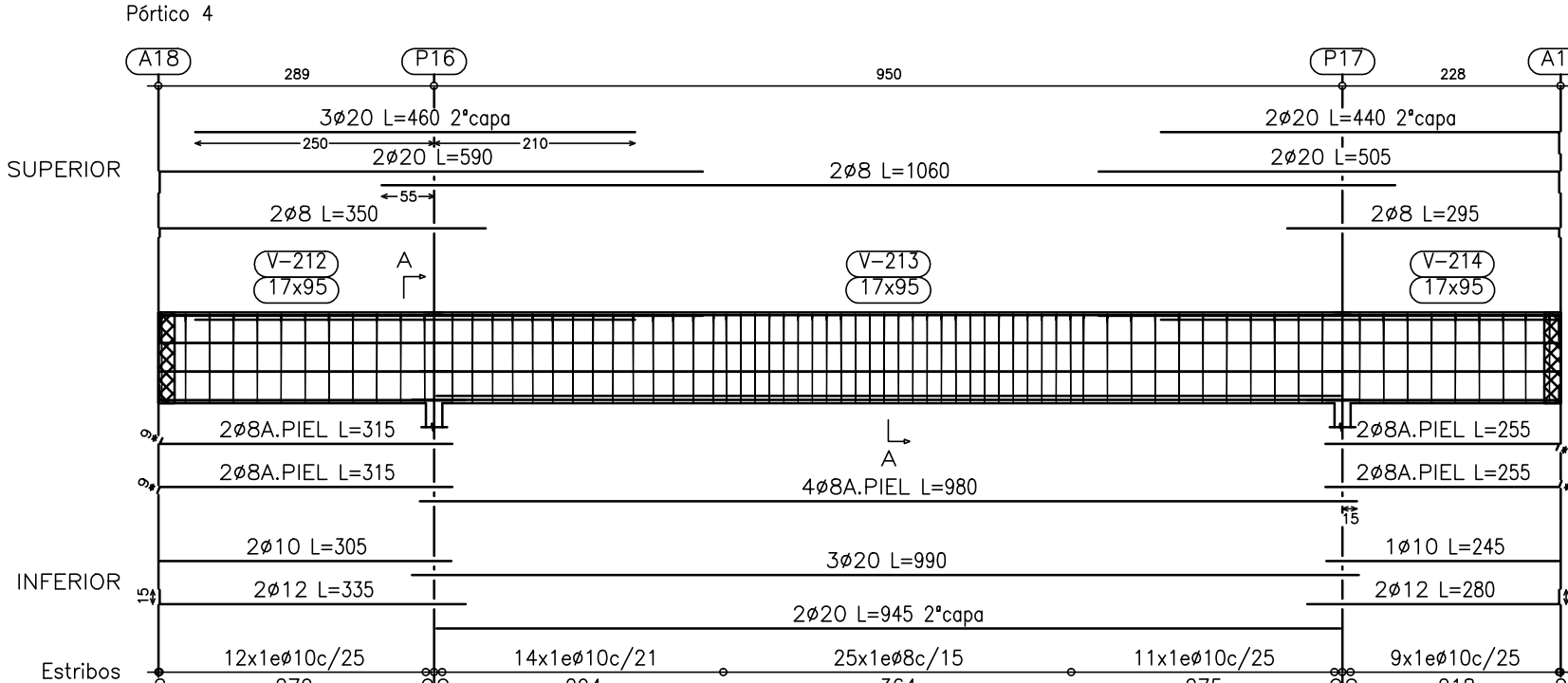
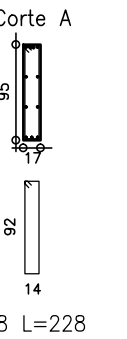
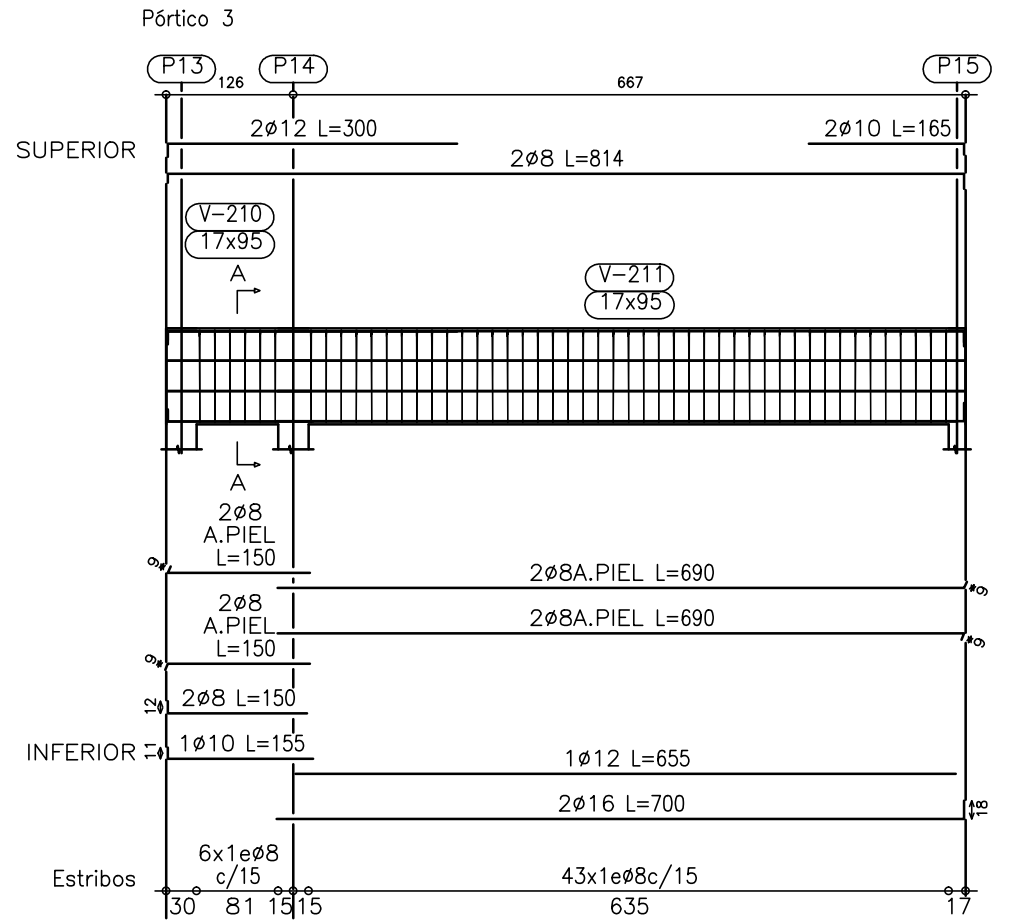
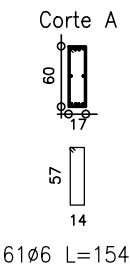
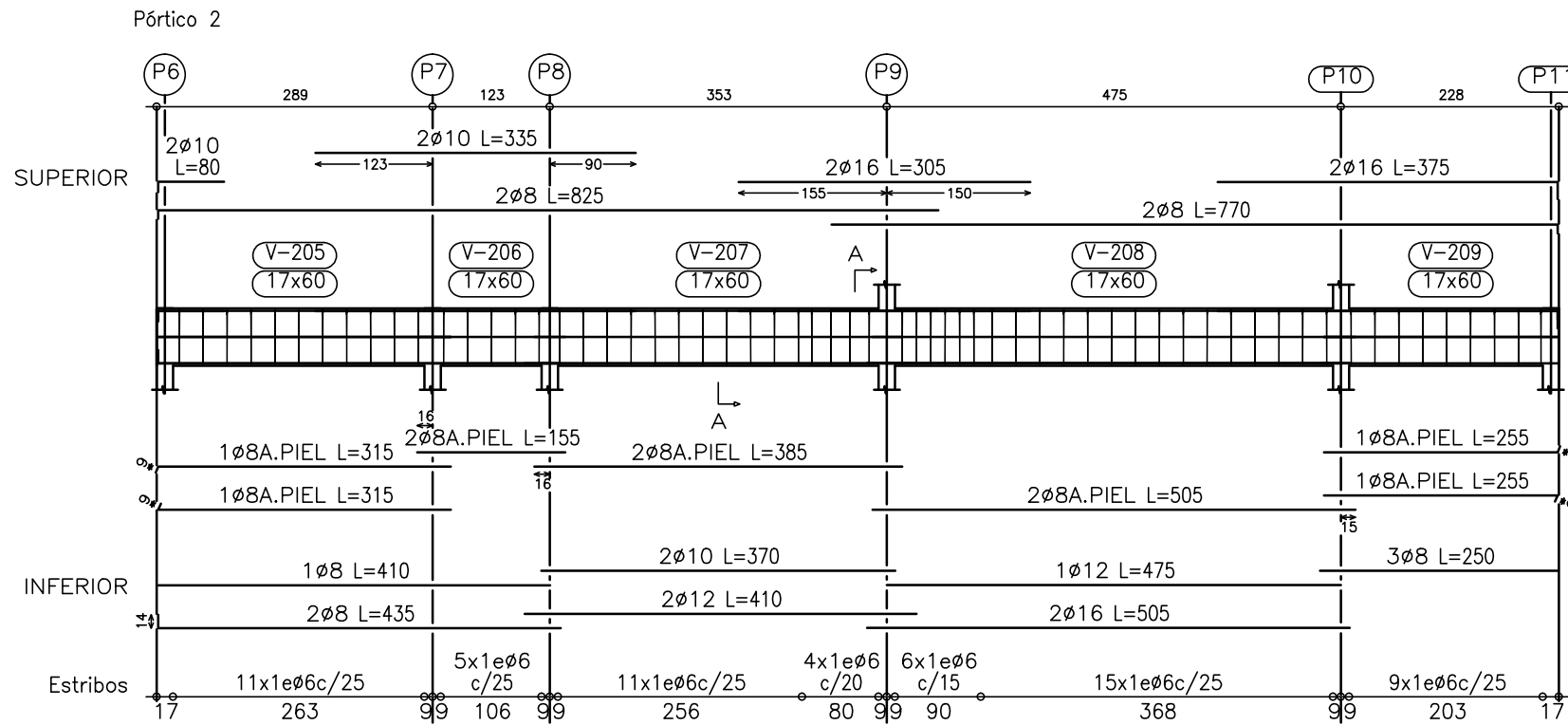
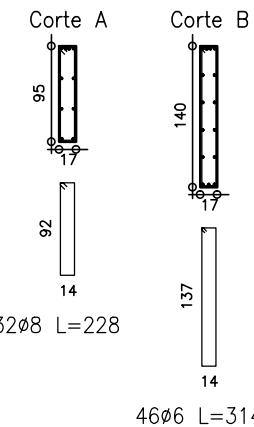
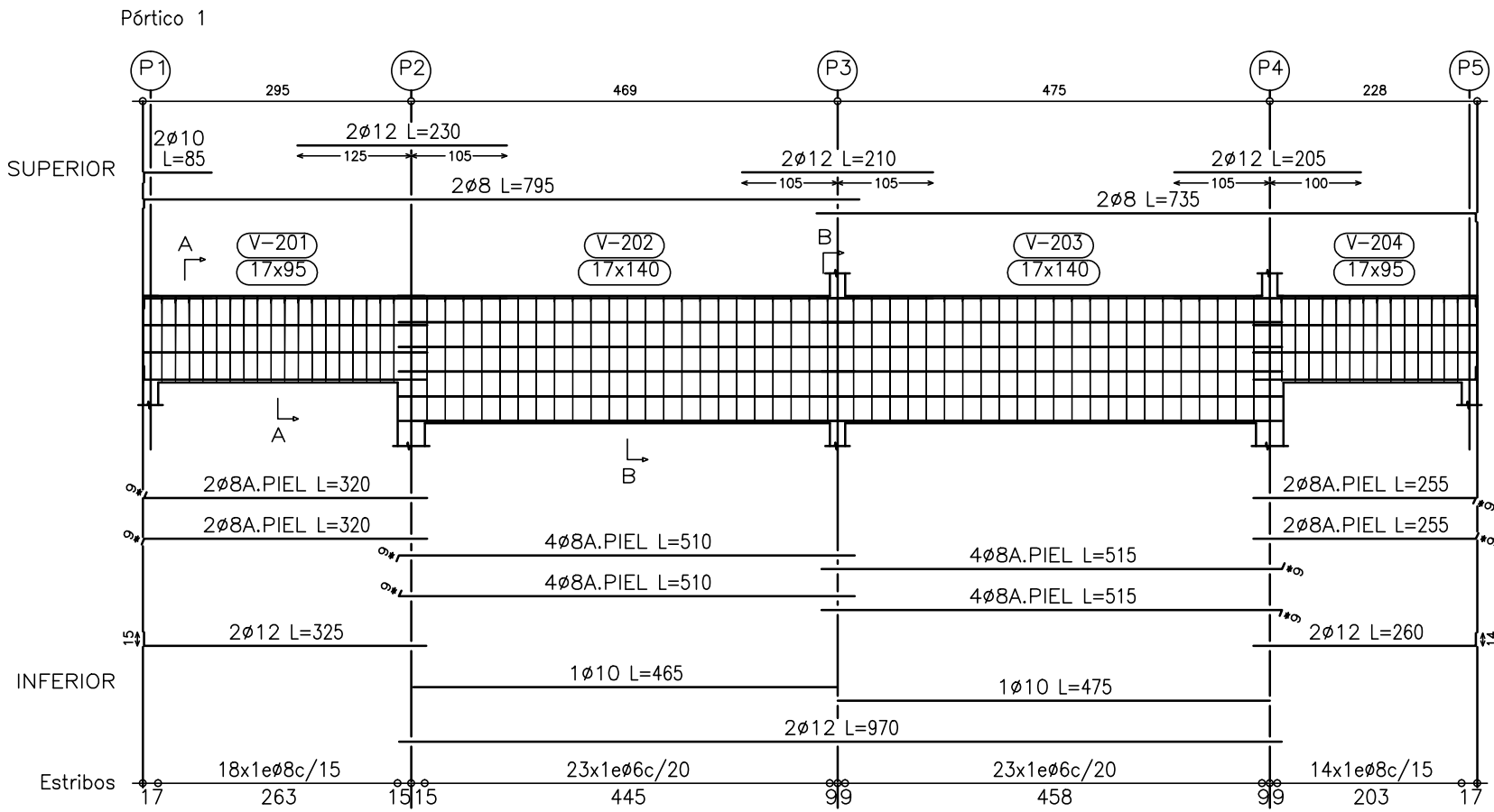


Sobre Planta Baja
Despiece de vigas
Hormigón: H-25
Acero: ADN-420

Resumen Acero Sobre Planta Baja Vigas		Long. total (m)	Peso (kg)	Total
ADN-420	ø6	706.5	157	
	ø8	4371.8	1725	
	ø10	298.2	184	
	ø12	378.5	336	
	ø16	409.2	646	
	ø20	305.8	754	3802



Recubrimientos Mínimos	
- cimentación	30mm
- Pilares de Índice 000 a 100	
- Vigas de Fundación	15mm
- Pilares de Índice 100 a 200	
- Vigas de Sobre Planta Baja	
- Losas de Sobre Planta Baja	15mm
- Pilares de Índice 200 a 300	

Materiales

_Hormigón - Tipo H25, resistencia característica de 250 kg/cm2

_Acero - Conformado , resistencia de fluencia 5000 kg/cm2

En los estribos de vigas y pilares de diámetro 6 mm se podrá utilizar acero de dureza natural (acero común), resistencia de fluencia superior a 2400 kg/cm2.

DIEGO HEREDIA BARRIOS
INGENIERO CIVIL
www.estudiodeingenieria.com.uy - Cel. 099040705

AREA DE PROYECTOS		DIRECCIÓN SECTORIAL DE INFRAESTRUCTURA	
ADMINISTRACIÓN NACIONAL DE EDUCACIÓN PÚBLICA		CONSEJO DIRECTIVO CENTRAL	
OBRA: JARDÍN Nº80	LOCALIDAD: YOUNG	FECHA: 2017	LÁMINA Nº: L28
CALLE: Gral ARTIGAS y 12 de OCTUBRE	DEPARTAMENTO: RIO NEGRO	ESCALA: 1/75	
PLANO DE: Vigas Sobre Planta Baja			
Vigas Índice 200			
ARQUITECTO: SANDRA SOTO	FIRMA:	E08	
AYTE. de ARQTO: FLAVIO FLORES	FIRMA:		
TÉCNICO: DIEGO HEREDIA	FIRMA:		
DEBUJANTE:	FIRMA:		